

# Hand to Heart

*A World of Puppetry*


**TRAVELING THROUGHOUT BUCKS COUNTY**
*September 2001–June 2002*
**September 2001**

18–20 Bucks County Community College, *Newtown* ★  
 26–Oct. 3 St. Andrew School, *Newtown*

**October 2001**

4–11 Newtown Elementary School, *Newtown*  
 12–14 PA Guild of Craftsmen Craft Fair,  
*Tyler State Park, Newtown* ★  
 15–19 Sol Feinstone Elementary School, *Newtown*  
 22–23 Calvary Christian School, *Fairless Hills*  
 24–29 St. Frances Cabrini School, *Fairless Hills*  
 30–Nov. 2 Pearl S. Buck Elementary School, *Levittown*

**November 2001**

5–8 Our Lady of Grace School, *Pemdel*  
 9–14 Tawanka Elementary School, *Langhorne*  
 15–19 St. John the Evangelist School, *Morrisville*  
 20–28 Eleanor Roosevelt Elementary School, *Morrisville*  
 29–Dec. 5 Quarry Hill Elementary School, *Yardley*

**December 2001**

6–11 Makefield Elementary School, *Yardley*  
 12–17 Rolling Hills Elementary School, *Holland*

**January 2002**

3–9 Faust Elementary School, *Bensalem*  
 10–16 Cornwells Elementary School, *Bensalem*  
 17–25 Snyder Girotti Elementary School, *Bristol*  
 28–31 Clara Barton Elementary School, *Levittown*

**February 2002**

1–6 James Buchanan Elementary School, *Levittown*  
 7–13 St. Michael the Archangel School, *Levittown*  
 14–20 Penn Valley Elementary School, *Levittown*  
 21–26 The Pen Ryn School, *Fairless Hills*  
 27–Mar. 4 William Davis Elementary School, *Southampton*

**March 2002**

5–8 Stackpole Elementary School, *Southampton*  
 11–15 Hillcrest Elementary School, *Holland*  
 18–20 St. Bede the Venerable School, *Holland*  
 21–26 Richboro Elementary School, *Richboro*

**April 2002**

2–8 Goodnoe Elementary School, *Newtown*  
 9–12 Longstreth Elementary School, *Warminster*  
 15–18 Willow Dale Elementary School, *Warminster*  
 19–29 Jamison Elementary School, *Jamison*  
 30–May 6 John Barclay Elementary School, *Warrington*

**May 2002**

7–10 J. M. Grasse Elementary School, *Sellersville*  
 13–16 Sellersville Elementary School, *Sellersville*  
 18 Upper Bucks Day of the Arts, *Quakertown* ★  
 20–23 Deibler Elementary School, *Perkasie*  
 24–29 Durham Nockamixon Elementary School,  
*Kintnersville*  
 30–June 3 Tincum Elementary School, *Pipersville*

**June 2002**

4–13 McDonald Elementary School, *Warminster*  
 14–18 Bucks County Library Center, *Doylestown* ★  
 19–22 Levittown Regional Library, *Levittown* ★

★ Public Visits



**Bucks County  
 Community College**  
 275 Swamp Road  
 Newtown, PA 18940



# Hand to Heart

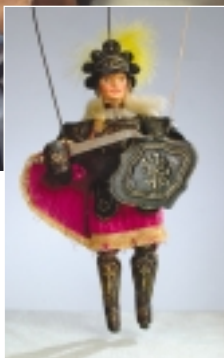
A World of Puppetry

THROUGHOUT THE AGES, puppetry has mystified and entertained us. For many cultures, this ancient art form provided news from neighboring villages, and contained a verbal history and commentary of and for the times. This year's Artmobile exhibition, *HAND TO HEART: A World of Puppetry*, features puppets of all types and styles: finger puppets, hand puppets, shadow puppets, rod puppets, marionettes, body puppets, and bun raku. There are puppets representing cultures from around the world such as Chinese opera puppets, a musician from Sri Lanka, four characters of Beauty and the Beast from the Czech Republic, Russian puppets, Angelica from Orlando Furioso, a dancer from Thailand, and Punch and Judy. Hands-on displays feature puppets of every kind (with the exception of body puppets) for visitors to manipulate and explore. Video presentations feature Kukla, Fran and Ollie, Jim Henson's *The Dark Crystal*, Mum Puppettheater's *From the Ashes*, and *Mystery of the Great Blue Heron Marsh* by The Wildlife Conservation Society.

As always, a trained, professional Artmobile Guide meets each class and gives a 45–60 minute presentation geared to their grade level. Guides' presentations help students to understand what they are seeing and encourage student dialogue about the art. In addition, *Teachers' Manuals* are sent to each school prior to our visit. These manuals help teachers incorporate the Artmobile experience into their curricula. They provide background information on the exhibition, pre-visit and post-visit activities for all ages, a glossary, a bibliography and class handouts. The *Teachers' Manual* is intended both as a tool to enrich and extend the visit, and as a teacher resource for years to come.



Curated by Bonnie Berkowitz, *HAND TO HEART: A World of Puppetry* is informing and delighting visitors of all ages while providing schools with an enriching opportunity for integrating arts with core curriculum and encouraging collaboration among the entire school community.



## MISSION STATEMENT

Artmobile is a non-collecting, traveling museum dedicated to providing the school children and residents of Bucks County access to fine, original works of art. It is a vital component of Bucks County Community College which provides important cultural outreach programs in accordance with the college's mission. We are committed to fostering an understanding of art, art making and the value of art in our communities and our lives by exhibiting and interpreting works of art.

Artmobile travels throughout Bucks County to schools and public sites. Trained, professional Guides engage students of all ages in dialogue about the art through tours geared to their grade level. At public sites the Guide is available to provide information and engage in informal discussion with visitors. Artmobile's exhibition program includes written materials sent to teachers prior to our visit with background information about the exhibit and practical, interdisciplinary ideas for related classroom activities in order to assist them in incorporating the Artmobile experience into their curricula.

Artmobile contributes to Bucks County Community College by providing a valuable service to our community, enhancing the college's public image, and promoting its presence throughout Bucks County. Through innovative and stimulating exhibitions appropriate for all ages, Artmobile establishes the college as a center for community services and cultural activities. By providing arts education programming for county schools, Artmobile supports the college's intention of serving as a resource to the community in areas of arts instruction. Artmobile is essential to the college's commitment to collaborative leadership in the arts.

Artmobile is the outreach museum of the **Department of the Arts at Bucks County Community College**.



A portion of Artmobile's general operating funds for this fiscal year has been provided through a grant from the **Institute of Museum and Library Services**, a Federal agency that fosters innovation, leadership and a lifetime of learning.

*HAND TO HEART: A World of Puppetry* is supported in part by a grant from the **Pennsylvania Council on the Arts**, a state agency funded by the Commonwealth of Pennsylvania and the National Endowment for the Arts.



**Bucks County Community College**  
275 Swamp Road  
Newtown, PA 18940

**For more information** about Artmobile and its programs, please call Fran Orlando, *Director of Exhibitions & Artmobile*, **215-968-8432**.